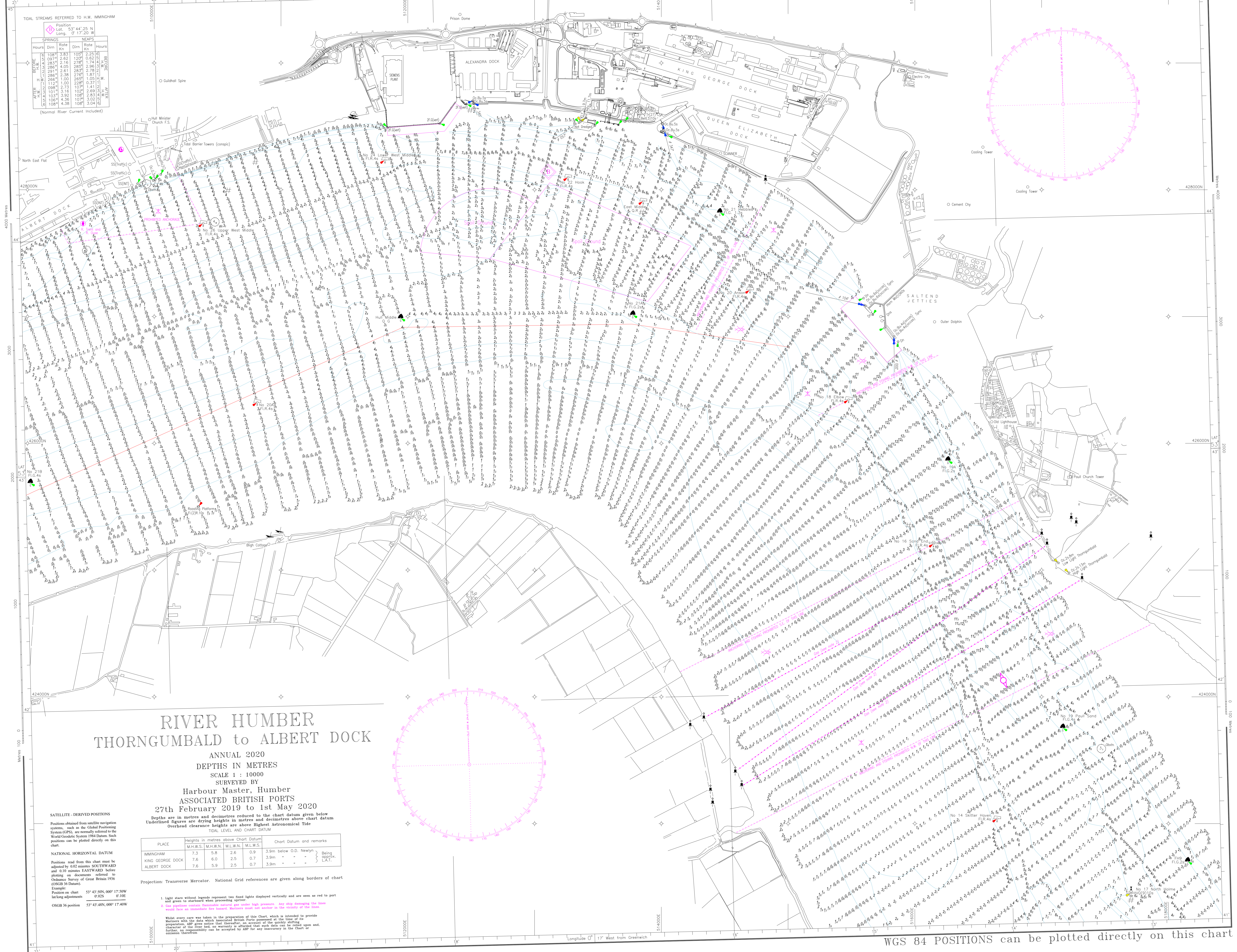


WGS 84 POSITIONS can be plotted directly on this chart



TIDAL STREAMS REFERRED TO H.W. IMMINGHAM

SPRINGS		NEAPS	
Hours	Dirn	Rate	Dirn
1087	183	1035	225
097	262	1207	062
283	116	2761	174
284	405	2835	296
291	361	2851	239
294	338	2770	187
266	100	2695	105
110	100	1027	037
098	273	1077	141
101	316	1027	249
103	392	1039	283
106	436	1079	302
108	438	1087	304

(Normal River Current Included)

RIVER HUMBER THORNGUMBALD to ALBERT DOCK

ANNUAL 2020
DEPTHS IN METRES
SCALE 1 : 10000
SURVEYED BY
Harbour Master, Humber
ASSOCIATED BRITISH PORTS
27th February 2019 to 1st May 2020

Depths are in metres and decimetres reduced to the chart datum given below
Underlined figures are drying heights in metres and decimetres above chart datum
Overhead clearance heights are above Highest Astronomical Tide

PLACE	Heights in metres above Chart Datum				Chart Datum and remarks
	M.H.W.S.	M.H.W.N.	M.L.W.N.	M.L.W.S.	
IMMINGHAM	7.3	5.8	2.6	0.9	3.9m below O.D. Newlyn
KING GEORGE DOCK	7.6	6.0	2.5	0.7	3.9m - - - - -
ALBERT DOCK	7.6	5.9	2.5	0.7	3.9m - - - - -

Projection: Transverse Mercator. National Grid references are given along borders of chart

Example:
Position on chart 53° 42' 50N, 000° 17' 50W
lat/long adjustments 0.02S 0.10E
OSGR 36 position 53° 43' 48N, 000° 17' 40W

1. Light stars without legends represent two fixed lights displayed vertically and are seen as red to port and green to starboard when proceeding upriver.
2. One light starboard (transverse) and one red light (top) would face an immediate fire hazard. Mariners must not anchor in the vicinity of the light.

Whilst every care was taken in the preparation of this Chart, which is intended to provide Mariners with the data which associated British Ports possess at the time of its preparation, ABP gives notice that there are no warranties or undertakings given as to the character of the information, or as to the accuracy of the data, or as to the correctness of the information therefrom.

WGS 84 POSITIONS can be plotted directly on this chart